



---

## Technical Bulletin

No. 39-2

Published: 21 October 2014

### Topic: Tube and Flap Selection and Repair Requirements

---

Recent CCM audits of tires to be installed have revealed that the quality control on used tube and flap inspections are below expectations. In consideration of the conditions observed we have updated the CCM tube and flap specifications

Please advise all M&R repair vendors, and all parties performing tire mounting and dismounting that the following specifications on tube and flap repairs are to take effect immediately.

#### Tube Information

1. Tubes are to be inspected and if in good condition and clean of debris are to be patched and reused wherever possible.
2. No more than 2 patches allowed per tube.
3. Valve stems should be straightened to as close to original angle as possible
4. No kinked, oblong or stripped stems are allowed.
5. Tube protectors are to be salvaged and reused wherever possible.
6. All replacement tubes are to be of 100% Butyl rubber only. All natural rubber tubes are not allowed
7. All tubes purchased or returned to CCM **MUST** be accompanied by a sealing metal valve cap

**NOTE: repair vendors are not allowed to repair tubes for reuse. Only recappers are allowed to test and repair tubes. Any damaged tube identified by the repair vendor is to be replaced – not repaired**

#### Flap Information

1. Flaps may be reused provided they are not cut, torn, doubled or otherwise present a hazard to the tube and stem. NOTE: particular attention is to be paid to the condition of the valve stem reinforcement area. Any flap exhibiting abrasion and cracking in the stem reinforcement area or signs of stress are to be replaced
2. All flaps must be checked for reinforcement in the stem area. Flaps that do not have a sufficient stem reinforcement area such as illustrated below



OR are not accompanied by an approved metal stem protector plate in good condition are to be replaced.

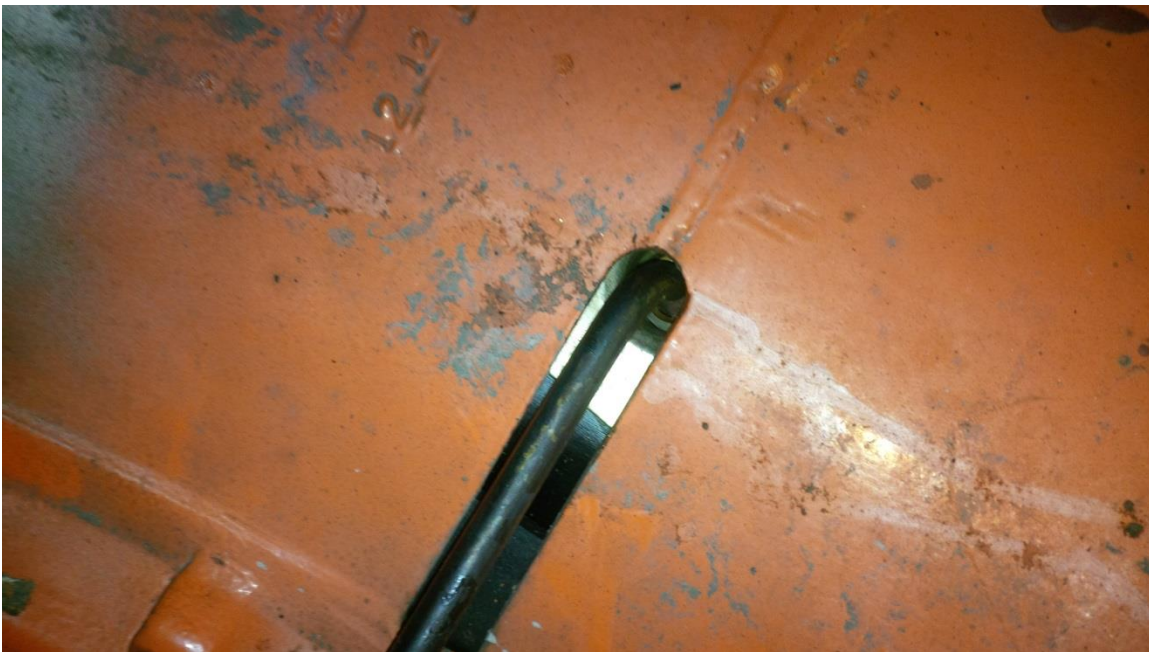
3. All replacement flaps must have a 4 inch reinforcement in the stem area to properly protect the tube

#### **Mounting Tires**

1. Care must be taken to ensure that the tube is properly positioned in the valve stem slot.
  - a. Stems that come out of the slot at an angle are not acceptable
  - b. Stems should not be in contact with the rim. Following are examples of unacceptable mounting



Bent or damaged flap protection plates are to be removed from service and are not to be reused. Note examples of damaged improperly mounted protectors above and following



2. Valve stems must be pulled all the way through the flap to prevent pinching
  - a. If equipped with a valve stem protector plates, the plates must be in good condition and the protector **MUST** be properly aligned with the rim and properly installed as illustrated below

